



An Integrated Approach to Success and Completion

Chief Student Services Officers

March 25, 2019

Dr. Martha McDonald, Vice President of Student Services

Dr. Gerald Sequeira, Dean of Enrollment Services

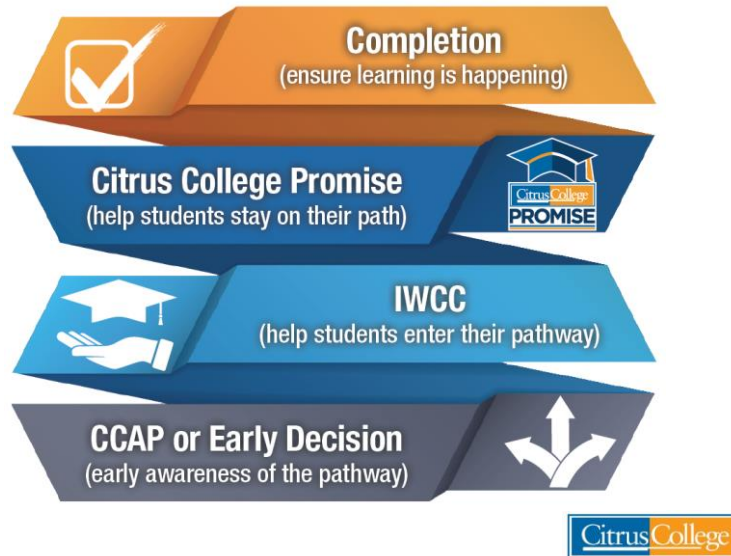
Ivon McCraven, Outreach Supervisor

Outcomes

- Integrate outreach and student support programs through
 - Seamless transition between programs
 - Use of cross-requirements
- Assist students to develop effective student behaviors
- Align programs to guided pathways
- Use promise program to incentivize participation in student support programs



Integrated Roadmap



Cross-Requirements

- College and Career Access Pathways (CCAP)
- Early Decision
 - if high school senior not in CCAP, invited to participate in Early Decision
- I Will Complete College (IWCC)
 - must be an Early Decision or CCAP student
 - must apply for Financial Aid each year
 - must see a Counselor on a regular basis
- Citrus College Promise
 - must be in IWCC
 - if eligible, must apply to EOP&S

Entering the Path

- Smooth hand-off between programs
 - CCAP and Early Decision students receive priority registration assistance at their high school and participate in Welcome Day
- Collaboration among staff
 - IWCC staff assist with Early Decision
- Students adopt successful behaviors
 - Complete college and transfer-level English and math in one year
 - Enroll full-time
 - Apply for financial aid
 - Apply to other student support programs



Staying on the Path

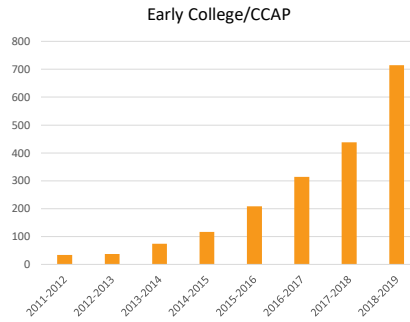
- Coordination with other support programs
 - Early Alert
 - EOP&S and Promise book services
- Integrated services – in house services
 - Counseling Services
 - Financial Aid
- Frequent reminders during key momentum points
 - Declaring a Major
 - Completing Comprehensive Educational Plan
 - Registration Assistance
 - Removing Holds
 - Re-Applying for Financial Aid



College and Career Access Pathways

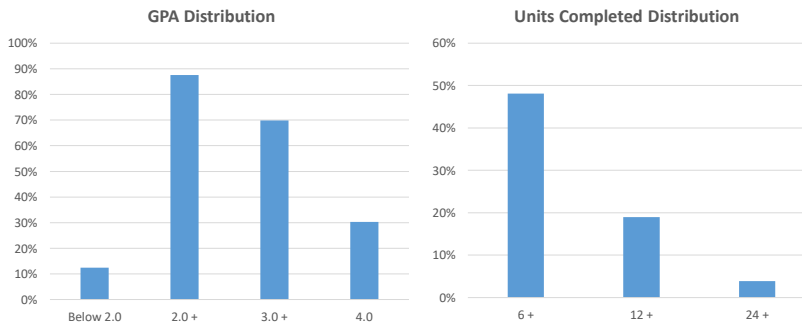
College and Career Access Pathways (CCAP) provides high school students with dual enrollment ensuring a seamless transition from high school to community college.

- AKA: Early College/Dual Enrollment/AB 288
- Customized CCAP program for each high school
- CCAP courses count toward high school and college graduation
- Students complete college onboarding process



CCAP: GPA and Units Completed

- Student Count (N=927)
- Average GPA: 3.16
- Average Units Completed: 7.0



CCAP: Success and Retention

Term	Enrollment Count	A	B	C	D	F	FW	W	Success Rate	Retention Rate
Spring 2017	388	155	133	50	14	11	1	24	87%	94%
Summer 2017	244	127	81	28	1	0	1	6	97%	98%
Fall 2017	406	163	141	68	16	8	2	8	92%	98%
Spring 2018	434	195	125	63	15	11	7	18	88%	96%
Summer 2018	390	273	81	18	9	2	0	7	95%	98%
Fall 2018	627	244	200	139	17	9	2	16	93%	97%
Total	2,489	1,157	761	366	72	41	13	79	92%	97%

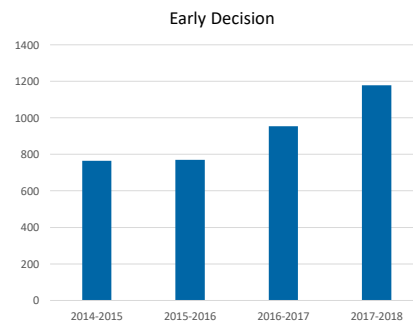
- Success Rate = Success Count / Enrollment Count; Success Count are Grades A, B, and C
- Retention Rate = Retention Count / Enrollment Count; Retention Count are Grades A, B, C, D, F, and FW
- Enrollment Count is total of all grades



Early Decision

Early Decision provides high school seniors a step-by-step process to apply, complete the onboarding process, and enroll at Citrus College.

- Non-CCAP high school seniors invited to participate in Early Decision
- Onboarding process
 - application workshop
 - placement using multiple measures
 - new student orientation
 - career workshop
 - an abbreviated Student Education Plan
 - registration assistance
- Priority Registration (1-Year)



Changes to Onboarding Process

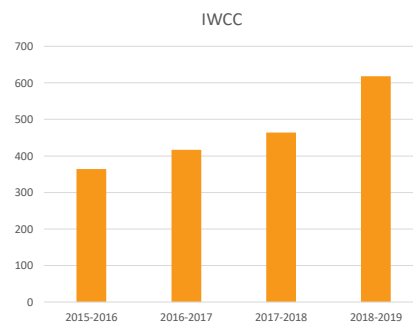
- Prompted by AB 705 and Guided Pathways
- Spring 2018 Early Decision
 - English and Math Assessment (180 minutes)
 - In-person Orientation (60 minutes)
- Spring 2019 Early Decision
 - Online Orientation (45 minutes)
 - Career Development Workshop (90 minutes)
 - Student Educational Plan (90 minutes)
 - Degree Works (degree audit and educational planning Software) Demonstration
 - Create Student Educational Plan with Counselor



I Will Complete College (IWCC)

The I Will Complete College (IWCC) program prepares new first-time college students to be successful college students and complete their educational goal.

- Encourage effective student behaviors:
 - completing college and transfer-level English and math in one year,
 - enrolling full-time,
 - applying for financial aid, and
 - being aware of important college requirements
- Completion specialists monitor each student's progress and provide frequent reminders during key momentum points



IWCC: Student Success

- Effective Student Behaviors
 - completing college and transfer-level English and math in one year
 - 61% completed transfer level English within one year
 - 50% completed transfer level math within one year
 - enrolling full-time
 - 100% of students enrolled full time
 - applying for financial aid
 - 100% of students applied for financial aid
- Scale
 - served about 33% of all first-time college students
- Equity
 - gains are similar for disproportionately impacted populations identified by the college's Student Equity Plan
- Completion
 - 24% of IWCC students in the first cohort earned an associate degree in three years (8% higher than similar cohort)



Citrus College Promise

The Citrus College Promise program increases college access for first-time college students, provides student support, and promotes completion.

- Access
 - Enrollment and Mandatory Fees
 - fall and spring semesters
 - first two years
 - Textbook Grant Program
- Student Support
 - IWCC Program
- Completion
 - Requires students maintain 2.0 GPA in year one and 2.5 GPA in year two
 - Students must complete 30 units by fall of year two
- 618 students in fall 2018



IWCC/Promise: Student Success

- Through winter 2019
- Overall IWCC/Promise students
 - 618 students
 - 67% completed transfer level English
 - 53% completed transfer level math
 - 100% enrolled full time in fall 2018
 - 100% applied for financial aid
- Black and Latino students
 - 76% of cohort
 - 66% completed transfer level English
 - 50% completed transfer level math



Questions



Thank You!

